

■ ■ wissner-
■ ■ bosserhoff



variana

The dismantlable and washable nursing home bed





variana

The dismountable and washable nursing home bed

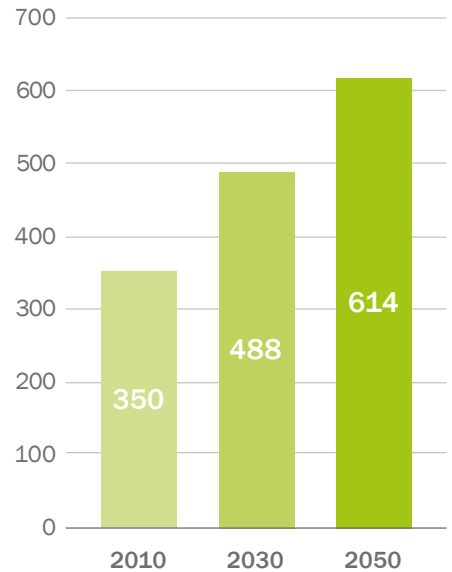
The global care market is subject to various challenges and influencing factors, in particular the rising proportion of people in in elderly and short-term care. This poses growing qualitative and economic challenges, not only for operators and care givers in nursing homes, but also for the relatives of the persons to be cared for, who want the best possible environment and care for their loved ones.

What is needed are concepts and products that facilitate care through a high degree of flexibility, are economically convincing and offer a standard of comfort and design to meet the high demands of relatives and those in need of care.

The variana nursing home bed combines precisely these functionally flexible elements with economy and design.

Forecast for the development of long-term care worldwide*

People in millions



* Statista GmbH 2021
(<https://de.statista.com/statistik/daten/studie/274028/umfrage/anzahl-pflegebeduerftiger-menschen-nach-weltregion/>)

Over
90%

The materials in our nursing beds are recyclable.

Over
40%

The materials in our nursing beds are already recycled.



In today's world, however, a nursing home bed is not only measured in terms of cost-effectiveness, design or functionality. In almost all areas of society, the sustainability of products is also playing an increasingly important role.

wissner-bosserhoff has made it its business not only to meet these demands, but to exceed them. As our nursing home beds are largely made of recyclable material, we make an effective contribution to sustainability and environmental protection.

variana

The dismantlable and washable nursing home bed





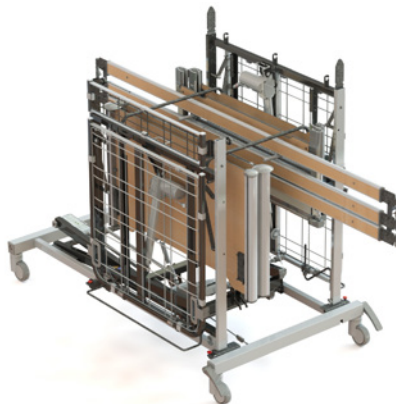
Intuitive operation

The washable handsets of variana nursing home beds impress with their intuitive operability and good overview. The buttons, illuminated when pressed, allow easy operation even at night.



Advanced functions

The locking of individual functions is possible quickly and easily using a shortcut.



Disassembly

The bed can be disassembled in a few steps without tools and then transported without problems. The disassembled parts can be easily attached to the base frame for easy movement.

SafeFree® Flex

Siderails as individual as your needs

Complementing the full-length siderails, variana offers a homely alternative with the SafeFree® Flex divided siderails, which provide as much freedom as possible and as much protection as necessary, in addition to providing real support during mobilization. In addition, variana's siderails can be easily configured as needed. All siderails can be quickly removed without tools and can be retrofitted at any time.



Sustainability

The materials of our siderails are more than 90% recyclable

Safe

Complete protection



- Secure fastening of the elements
- Prevents unintentional loosening or the removal of the side elements
- Removable without tools

Flexible mobilization



- Optimum length and individually adjustable height
- Hip protection during sleep, as well as comfortable and ergonomic mobilization of the resident



Free – fewer freedom-depriving measures*

Completely divided



- Deliberate "omission" of siderails
- Investment security for the operator, legal security with regard to freedom-depriving measures for the nursing staff or relatives

Divided in half



- One-sided, divided SafeFree® Flex siderails and one-sided, continuous aluminum siderails
- Fully washable side panels

Completely continuous



- Continuous aluminum siderails on both sides
- Fully washable side panels

More economic efficiency

Flexibility according to demand

The budget can be used as flexible as the side elements can be attached. As an alternative to our completely washable side elements, head parts and footrests, the bed can also be equipped with homely wooden linings.



Safety by day and night

SafeSense® – the intelligent bed exit sensor system

In us, you have a reliable partner for the reduction of freedom-depriving measures (FDM): With SafeSense®, wissner-bosserhoff presents an intelligent assistance sensor system, which reliably helps reduce freedom-depriving measures day and night. It is equipped with an automatic night light, which is activated when the resident leaves the bed and is deactivated when the resident is back in bed again. SafeSense® is compatible with standard nurse call systems and can be retrofitted to wissner-bosserhoff nursing home beds manufactured in 2002 or later.



More safety – fewer freedom-depriving measures (FDM)*

- Faster response time in the event of falls
- Greater safety during night and weekend shifts
- Fewer control rounds
- Ideal in combination with SafeFree® siderails

Automatic night light

- Night light is automatically switched on when the resident leaves the bed
- Night light is switched off again as soon as the resident is back in bed

Individual call notification

- Freely adjustable immediate alarm from 0 seconds to 30 minutes
- Adaptation to the resident's mobility

Integrated + retrofit kit

- Accessory option for our current variana nursing home beds
- Retrofit kit for our electrical nursing home beds manufactured in 2002 or later
- Available with cable or wireless



Washable flexibility

Easy cleaning of the complete bed

The variana nursing bed is equipped in series with the washability kit "Standard" and therefore allows a flexible and quick cleaning of the bed in regular washing cycles.

If the daily care routine requires more frequent washing cycles, however, variana can also be equipped with the "Premium" washability kit and be configured to meet the needs of any facility. As a result, regular cleaning of the bed can disinfect the frequent contact points and contribute to infection control.



variana allows flexible cleaning, which can be perfectly adapted to the needs of the facility.



Invisible protection: With the "Premium" washability kit, the bed receives an additional CDP* coating to reliably protect the bed even in case of frequent washing cycles.



Completely washable: With variana's new head parts and footrests and full-length and divided siderails, even the bed's most common contact surfaces are completely washable.

Contribution to pressure injury prevention

Lying surfaces modularities and double retraction

The so-called double retraction has been a component of the wissner-bosserhoff patient surfaces for years. With the double retraction function, both the backrest and legrest are located further apart from the seat section, thereby enlarging the bed area. Results of pressure measurements clearly show that the pressure load in case of the double retraction function is considerably lower than in a standard patient surface.

Approx. 37,5 %

of all residents in German old people's or nursing homes are subject to an increased risk of **pressure injuries**

Source: wissner-bosserhoff's own research, 2020

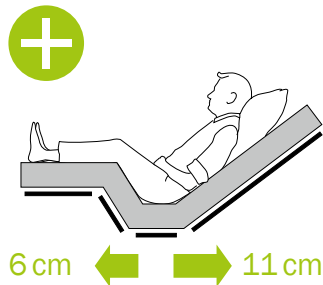
Approx. 2,7 million

of people in Germany suffer from chronic wounds such as **pressure injuries**

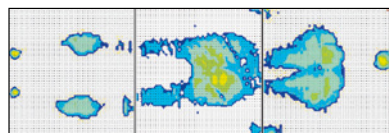
Source: BVMed 2012 study

Our solutions

WIBO patient surface with notable relief

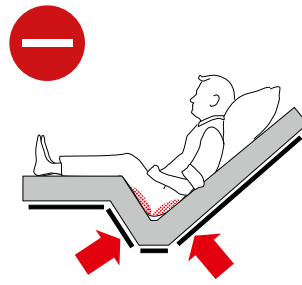


Double retraction = pressure injury prevention

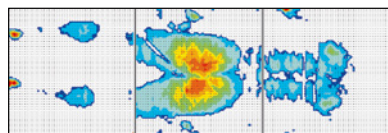


Thermal image of a BiNetic patient surface

Standard patient surface without relief



Single retraction = risk of pressure injury



Thermal image of a standard patient surface

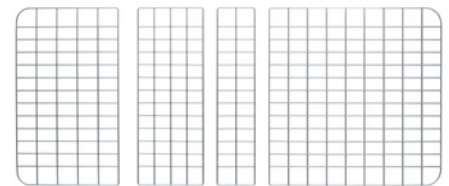
Double retraction =

17cm

more room in bed

Patient surface modularity

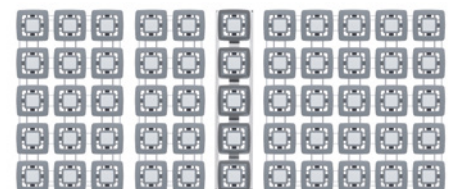
You can choose between 3 different patient surface options:



Aero wire grid (standard)
→ Good ventilation



EasyClean synthetic mats
→ Easy to clean



Comfort patient surface,
55 spring elements
→ High lying comfort and easy pressure relief

Design | head parts / footrests

Head part



Design G



Design Ts



Design V

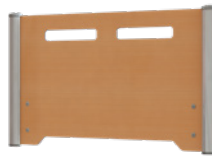
Footrest



Design G

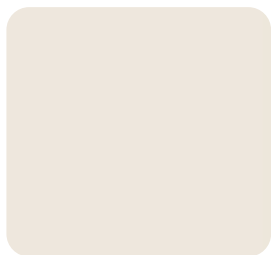


Design Ts



Design V

Colors | décors



White-gray (U11050)



Lindberg Oak (R20021)



Altmühl Beech (R24006)

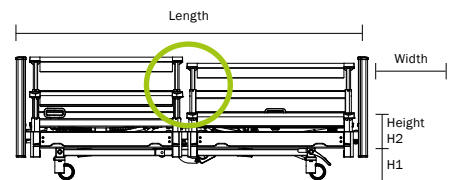


Steamed Beech (R24034)

Furnishings and accessories

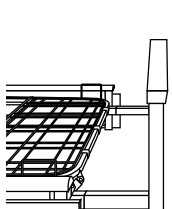
Technical data

Safe working load	235 kg • 200 kg resident weight • 35 kg mattress and accessories
Length x width	218 x 111 cm
Height adjustment	H1 = 34 - 82 cm H2 = 25 - 73 cm (optionally with other base frame)
Nominal dimensions of patient surface	87 / 90 x 210 cm Optional: 105 x 210 cm Optional: 120 x 210 cm
Dimensions of patient surface	200 x 90 x 14 cm Optional 210 x 105 x 14 cm Optional 210 x 120 x 14 cm
Brake system	Central parking brake with directional lock
Optional	Head and foot side extendable by 10 cm

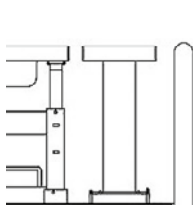


10-0910
variana

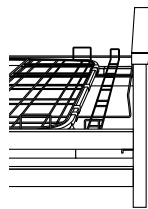
Bed extensions



Temporary bed extension, type 10, siderail (standard)



Protector for head and foot side bed extension by 10 cm each

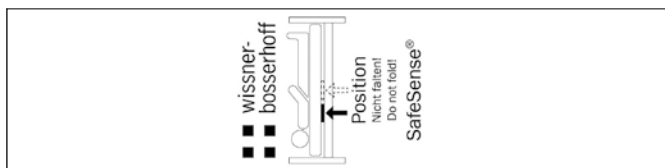


Integrated bed extension, type 09, aluminum siderail, telescopic

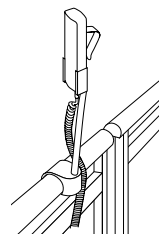


3D horizontal and vertical wall stopper castors

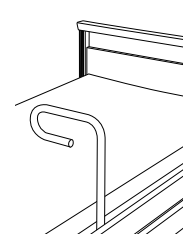
Accessories



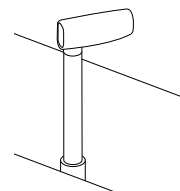
02-000876
SafeSense® sensor mat 2.1, 80 x 20 cm



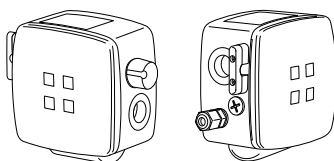
10-0913
Handset holder for divided side guards



10-0715
Stand-up aid for type 09 siderails



10-0634
Mobilization assistant MobiStick 2



10-0812
SafeSense® digital bed-exit-box 2.1 with cable or radio

SafeSense® as set:

Sensor mat 2.1 and bed-exit box 2.1
10-0871 Cable version
10-0872 Radio version

Members of LINET Group

wissner-bosserhoff GmbH

Hauptstr. 4-6 | 58739 Wickede (Ruhr) | Germany

Tel. +49 2377 784-0 | Fax -163 | info@wi-bo.de | wi-bo.de

